

2012 Awards Jury



Howard Abel, FASLA, RLA

Howard was a founding partner of Abel Bainnson Butz, LLP Landscape Architects, and has close to fifty years experience in urban design, construction overview and business management. His numerous NY-area projects include Hudson River Park, Riverbank State Park, and the New York Botanical Gardens. His work has appeared in Landscape Architecture Magazine, Architectural Record, and others. He served as President for the New York Chapter of ASLA, President of the NY State Council of Landscape Architects, and President of the NY State Board for Licensure. He has also taught planting and design courses at CCNY.



Lawrence Porter, ASLA, LLA

Larry is the senior landscape architect with the Rutgers Office of University Planning and Development. His career has focused on various aspects of public practice including positions with the Central Park Conservancy, and the Bergen County Department of Parks. Porter taught in the Rutgers Department of Landscape Architecture for over 20 years. He was recently the chair of the ASLA Campus Planning and Design Professional Practice Network and participated as a juror for the SCUP/AIA-CAE design awards. His work has been recognized by the NUASLA and the NJ Parks and Recreation Association.



Margie Ruddick

Margie has forged a design language integrating ecology and culture. Her transformative designs have won numerous awards for promoting a more sustainable vision of urban life. Ms. Ruddick headed her own firm for 25 years before becoming a partner at WRT. Since leaving in 2007, she has worked on projects independently, in addition to writing, lecturing, and teaching. She taught at Princeton University in 2011. Her new book *What Are We Doing Here Anyway? Adventures in Sustainable Design* is currently under review for publication.



414 River View Plaza
Trenton, NJ 08611
Phone: 609-393-7500
Fax: 609-393-7891

www.njasla.org



sponsored by

IRON AGE
DESIGNS



2012 Professional Awards

Landscape Architects:
NATURAL LEADERS

sponsored by **Iron Age Designs**

The New Jersey Chapter of the American Society of Landscape Architects is pleased to present the 2012 Professional Awards. The awards program is intended to help broaden the boundaries of our profession; increase public awareness of the role of landscape architects; raise the standards of our discipline; and bring recognition to organizations and individuals who demonstrate superior skill in the practice and study of landscape architecture.

A jury of distinguished landscape architects reviewed thirty-three submissions and selected winners in three categories. This year, you will have the opportunity to view the winning projects throughout the conference on a continuously-running video presentation located on the conference floor. The winners will also be featured in upcoming NUASLA newsletters, our website, and chapter displays promoting the profession throughout the state.

Thank you for attending this year's presentation. We hope you will not only enjoy yourself, but that you will find inspiration for your own winning submission to next year's program.

Eric Mattes
Eric Mattes

Denise Mattes
Denise Mattes

Honor Award

LANDSCAPE ARCHITECTURAL DESIGN
27th Street Residence, New Jersey
Hess Landscape Architects for private client



The landscape for this modernist beach house, built in 2009, enhances the contemporary feel of the property while creating an orderly, practical series of spaces for modern living. The principal challenge was how to integrate the client's extensive program on this diminutive lot – just 5500 square feet. Adapting the existing pool and carefully aligning new elements both vertically and horizontally, allowed the indoor and outdoor spaces to flow together. The design incorporates a new spa with a spillway into the pool, an outdoor shower, ipe decks, and storage areas for bicycles and trash receptacles. Carefully selected modern materials and rich plantings marry the house to the landscape.



Merit Award

LANDSCAPE ARCHITECTURAL DESIGN
BASF Wildlife Habitat and Environmental
Educational Classroom, Rensselaer, New York
MKW + Associates LLC
for client BASF Corporation

This brownfield project explores the relationship between artifice and nature, referencing the vernacular of adjacent industrial sites while regenerating ecological function. The site boasts a range of habitats including foraging and nesting sites for birds and butterflies, and a freshwater wetland. It provides a template upon which industry and nature can co-exist. The site includes a LEED platinum building with a dedicated Environmental Education Classroom, exhibit space and offices. The new center will serve as a living laboratory and a model for future development for BASF and the industrial community at large.



Merit Award

LANDSCAPE ARCHITECTURAL DESIGN
Berkshires Estate, Tyringham, MA
Edgewater Design, LLC, for client Jennie Kassanoff

This project involved the renovation of an 11-acre section of a 19th century residence located on 500 diverse acres known as Wildbrook. The landscape complements new architecture while respecting the topography and hydrology of the valley. It includes a meandering entry road, motor court, spa area with heated terrace, and dining area – all enhanced by extensive use of native plants which tie them to the natural landscape.



Merit Award

LANDSCAPE ARCHITECTURAL DESIGN
Hudson River Park
Tribeca Section, New York, NY
Mathewus Nielson Landscape Architects, P.C.
for client Hudson River Park Trust

This project reconnects urban residents with their shoreline, mighty river, the horizon, sunsets, seasonal change, and reemerging habitats. This section of the long-evolving riverfront park is 1 1/2 miles long, and includes ten acres of upland open space, seven acres of recreation space on two piers, and ninety acres of safe water boating between the piers. On a difficult, monotonous site – formerly devoid of self-sustaining ecological systems or recreational benefit – Hudson River Park's Tribeca section has achieved remarkable ecological and programmatic diversity.



Merit Award

LANDSCAPE ARCHITECTURAL DESIGN
September 11th Memorial
Mercer County, New Jersey
Clarke Caton Hintz for client Mercer County Parks Commission

This 'park within the park' occupies approximately 3/4 of an acre within the 2,500-acre county park, creating an intimate space for visitors to reflect and grieve. Constructed entirely by Park Commission staff and volunteer construction workers, the memorial incorporates a steel fragment from the fallen towers. It calls to mind the physical and emotional impacts of the terrorist attacks of September 11, 2001, while asserting our collective ability to overcome fear and celebrate life.



Merit Award

LANDSCAPE PLANNING AND ANALYSIS
Janet Johnston and William D. Housenick
Memorial Park Master Plan, Bethlehem, PA
Pennoni Associates for client Bethlehem Township, Pennsylvania

This project used a McHargian process to develop a detailed, phased, plan to preserve and enhance a unique private property in Bethlehem, PA. Bequeathed to the Township by a prominent local family, the site will be preserved for public passive recreational use. The 55-acre site includes a 1921 mansion with several outbuildings and connecting drives, on a diverse rolling landscape. The master plan celebrates the site's unique local history and ecological context while providing the basis for sound stewardship of its natural and man-made resources.



Merit Award

LANDSCAPE PLANNING AND ANALYSIS
A Story of Place: Where Natural and Human
Systems Converge, Mahwah, New Jersey
Quercus Studio LLC for private client

This plan is presented in the form a story: it describes a regenerative approach to landscape master planning which includes rigorous analysis of living systems, historical research, and input from environmental specialists. It describes relationships between the site's natural systems and the people who live here. The plan is intended as the foundation of an interactive process of design, review, feedback and further design. This process will allow the land and its inhabitants to grow and evolve together, supporting the clients' commitment to collaborating with nature so that each can evolve to the highest degree possible.



Honor Award — Student

LANDSCAPE ARCHITECTURAL DESIGN
H*COMB, New Brunswick, NJ

Rutgers University Landscape Architecture Students: Ben Andrews, Jason Benson, Stacey Delgado, Matthew Draheim, Nick Grandi, Erin Greenwood, Hany Hanafy, David Hanrahan, Meredith Knesewitsh, Robert Logan, Cha Wen Rung, Michael Saltarella, Steve Somers, and Zeina Zahalan for client Material Technetics, Rutgers University

This design/build student project investigated the use of digital design and production techniques to create a structure in which architecture and landscape architecture are synthesized. Following individual research and presentation, the group decided on a design concept and materials. Together they fabricated, assembled, and installed over two thousand parts, using a medium-density fiberboard and a laser cutter. It was installed over four days, with stone dust and plants, outside Rutgers' Blake Hall. The light cast by the sun through the trees and the honeycomb changes throughout the day and throughout the year, giving the viewer a different experience every time. H*Comb symbolizes the ways in which contemporary techniques can help to push the boundaries of landscape architecture.

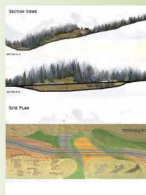


Merit Award — Student

LANDSCAPE ARCHITECTURAL DESIGN
Square 575, Washington, DC

Rutgers University Landscape Architecture Students Nicholas Grandi and Hany Hanafy for client The United States Botanical Garden

This project transforms a parcel adjacent to the US Botanical Garden on the National Mall into a demonstration site for sustainability awareness. Its management plan encompasses every drop of water on the site using black-water filtration, grey-water filtration, swales, and rain harvesting. The project is a tribute to the American landscape and the American people: its features function with the natural landscape, and simultaneously serve as monuments and memorials.



Merit Award — Student

LANDSCAPE ARCHITECTURAL DESIGN
Underpass, West Veil Pass, Eagle County, Colorado

Rutgers University Landscape Architecture Students: Michael Cucinotta, Christopher Jurgensen, and Danny Su, for client ARC Interdisciplinary Partnership

This project arose in response to the ARC International Wildlife Crossing Infrastructure Design Competition, which solicited conceptual designs for a wildlife overpass structure in the White River National Forest in Eagle County, Colorado. The goal was to allow wildlife to cross over Interstate 70, which will soon grow to ten lanes and include a commuter rail line. This solution turned the proposal upside down by rerouting and raising the highway, giving nature top priority and allowing wildlife, along with topography and hydrology, to continue unimpeded past the highway.